



*A registered charity with deductible gift recipient status. ABN: 28 122 954 214  
www.marshfoundation.org.au ph: 03 9427 0055: email: ceo@marshfoundation.org.au*

A message from the Executive Director

What a busy 3 months it has been and so much achieved with your support!

Our hearts were saddened as we commemorated the 2002 Bali Bombings in Bali, Melbourne and Canberra and note services were held around many cities throughout Australia. It has served to reinvigorate us and mobilize our efforts in every way we can.

Our membership drive has been successful though we need many more! In particular we need **Cargo Members** whose invaluable support would help our organization cover the costs of shipments to Indonesia and other neighbours who need our support.

2013 is shaping up to be very exciting with plans for volunteer projects overseas and lots more containers of medical supplies heading to hospitals and medical centres. We have completed our 5 year Business and Strategic Action Plan and whilst this is always an evolving plan it has helped our Board focus energies on the expansive goals set for the period.

The Board looks forward to meeting up with you at our *Xmas Party* at the end of November when we will come together to celebrate the year past and all its achievements.



*Bali—10 Years On  
Lindy Pickersgill, MF Board  
Member and Chair of our  
Fundraising Committee shares  
her experiences of the Bali ser-  
vice.*

It was a privilege and an honour to be invited to attend the 2012 Bali memorial service at the GWK cultural Park in Bali. I have always felt a close association to the survivors and victims of the 2002 Bali bomb as I was in Bali in 2005 when the second bombings occurred at Jimbaran & in Kuta Square.

It was an emotional and moving service attended by dignitaries, survivors and volunteers and I enjoyed the opportunity to meet and mingle with these amazing people, especially those who worked tirelessly alongside David and Clair on that fateful night and following days.

For my companions it was an opportunity to cleanse and release their troubled souls and an opportunity for me to support them. It was a time for reflection and the most amazing service I have ever attended.

Thankyou David and Clair for allowing me to accompany you as a proud Board member of the Marsh Foundation. It was a truly memorable experience that I will always hold close to my heart.

*Bali Orphanage—The Marsh Foundation supports the Kesayan Ikan Papa Orphanage as one of its private donors. Clair Marsh, Hon. Secretary of the Marsh Foundation writes ...*

For many years the plight of Bali's physically and mentally handicapped and orphaned children was ignored. In July 1983, a handicapped school named "Sekolah Luar Biasa" or "Special Education" was established for disabled children. The number of students was nine with four volunteers living with them and acting as teachers.

However, each year, the number of children grew. Finally, the wife of the Regent encouraged the Gian-yar government to build a real orphan home. In 1986, the Panti Asuhan (Orphan House) "KESAYAN IKANG PAPA" (which literally means passionate for the poor) was created as a home for orphans who were poor and disabled.

*Since 1998, sixty children are enrolled in the school at any one time. Twenty children live with the schoolmaster, who acts as a guardian parent, while forty others live in their own home but attend the school every day. This has now grown to forty living in and 90 attending the school.*

The orphanage was built to reach orphan children, and children from poor families, who needed a place to live, access to education, good health care, food, and also assistance to meet their daily needs. We



hope the orphanage can help them with providing all these things.

**Our School & Education.** Bapak Dewa Berata and his wife have been looking after the children of the orphanage since 1986 and Drs I Nyoman Sukantha has the responsibility of the orphanage and school.

In Bali, there are about 16 special schools for disabled children located throughout the island. Funding for the schools is provided by the Government's social department. Kesayan I Kang Papa orphanage also received additional funds from Yayasan Darmais (a foundation). All other funds are donations from the parents of day students and also through private donors.



### **Tonga Shipment**

Following communication with Peter Drummond, Variety Medical Missions South Pacific, one 40foot container holding medical supplies, mattresses and children's goods was shipped to Tonga. Total cost of shipping was \$9,868.67. The container held:

- 43 hospital mattresses
- 11 Filing cabinets
- 4 baby strollers
- 51 boxes of children's books and toys
- 593 boxes of medical supplies

***We would love to send more. With your help Tonga can receive more general and medical supplies***



Container all loaded and off to Tonga – our packing volunteers from left: Deborah Walton, Peter Morrison, Neville Crowe, Val Crowe, Andrew Powell, Allan Hurley, Simon Wheelton, Tom Tully, Andrew Moffatt, Don Orr and Kim Price and of course behind the camera is the wonderful Stewart Garney (not often silent or invisible!)

### **2013 Plans**

We have a lot of activity planned for 2013; ***Our primary objectives are to increase the amount of goods donated which will give us the opportunity to increase our shipments of containers. We aim to strengthen our relationships with partnering organizations both here and overseas and recommence our volunteer programs.***

***Our volunteer programs*** - where we go to a specific orphanage or medical centre and undertake maintenance work **OR** provide training of medical staff is greatly needed and is a tremendous opportunity for us to provide practical support to impoverished villages where the smallest thing can mean so much. In the past we have assisted with the maintenance of the *Kesayan I Kang Papa orphanage* and a number of medical centres.

We have significant challenges ahead raising funds to meet our expanding activities. Whilst approaching companies based here in Australia, we are also approaching individuals to become *Cargo Sponsors*. ***For just \$5,000 you can immediately provide assistance in covering the costs of the containers shipped overseas.***

And at the local level we look to increase awareness of our organization by hosting *market stalls*. These will be solely information stalls and provide us with the opportunity to discuss past activities and future plans with the general public.

***Our packing days*** are settling down to 1 held every quarter with over 20 people assisting at our October packing day. A great contribution came from staff at the ANZ bank who took the time out to have a volunteer day and come and assist us packing boxes.



## **Xmas Party**

**Put your dancing shoes on Ladies and Gents as we have a big night planned on November 30th.**

**Get in quick, there are limited spaces at the wonderful Athenaeum Club.**

### **Strategic Plan**

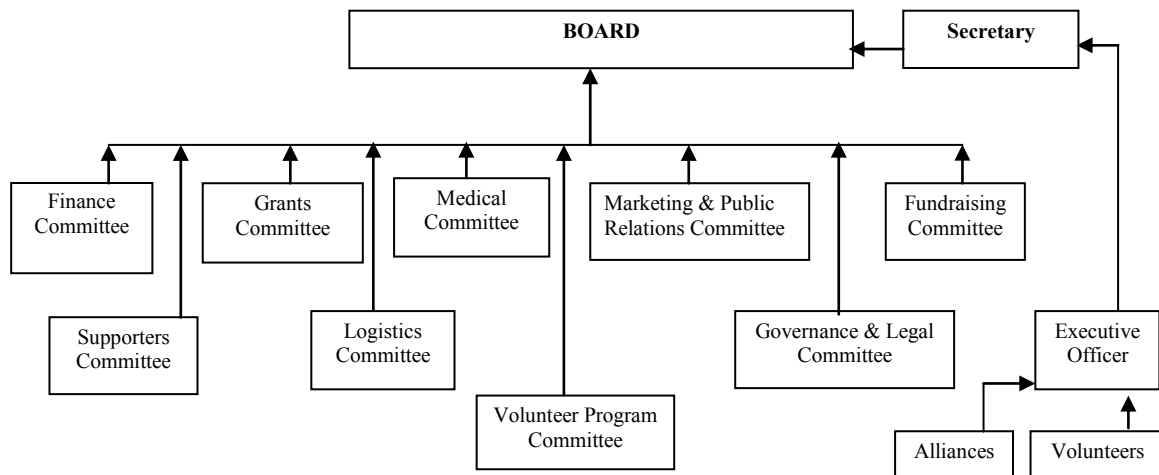
Our Business and Strategic Action Plan has been completed and lays out the details of our aims and objectives for the next five years. The Plan is available to members on request.

Some significant accreditations are being sought from ACFID (Australian Council for International Development) and AusAID which will assist us building relationships with other NGOs and significantly build on our partnerships with NGOs in the recipient countries.

In addition, our Board has been strengthened to have an active Committee structure.

### **Board Members**

<i>Dr David Marsh</i>	Chairman of the Board, Chair of the Medical Committee
<i>Mrs Clair Marsh</i>	Hon Secretary, Chair Volunteer Program
<i>Paul Wheelton</i>	Chair Finance Committee & Chair Supporters Committee
<i>John Sinisgalli</i>	Chair Grants Committee
<i>Dianne Sisak</i>	Chair Governance & Legal Committee
<i>Angela Sbisà</i>	Chair Marketing & Public Relations Committee
<i>Lindy Pickersgill</i>	Chair Fundraising Committee
<i>Amanda Catanach</i>	Member Fundraising Committee
<i>Sara Van Hecke</i>	Member Fundraising Committee
<i>Ronnie Atlas</i>	Member Marketing & Public Relations Committee
<i>Allan Hurley</i>	Member Logistics Committee
<i>Tom Tully</i>	Chair Logistics Committee



### **Volunteers**

There is so much to do. If any of the following match your areas of interest, contact us and volunteer:

\* as a packer or collector of donated goods OR \* market stall assistant – urgently needed for the first 3 Saturdays in December OR \* office volunteer or \* overseas working holiday participant or why not nominate to become a member of one of our Board Committees?

### **Membership Can you bring a new member to the Marsh Foundation?**

General membership \$50pa Or do you know someone that would like to be a member of the 202 Club, \$202pa. In remembrance of the 202 victims of the Bali bombings, the 202 Club is a constant reminder of the work we do and the lives we help change for the better.

**Or, become a Cargo Sponsor  
We need 20 Cargo Sponsors to cover the costs of shipments for 2013.  
Can you help?**